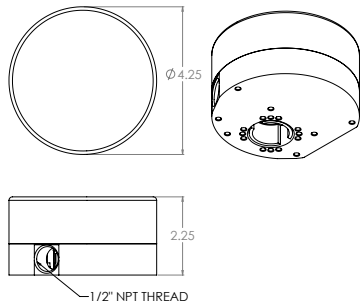
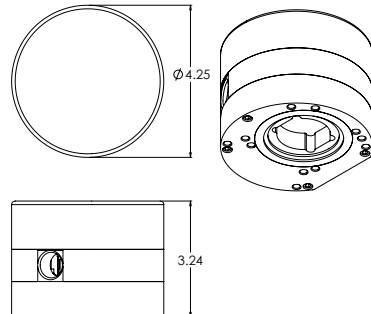




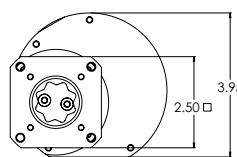
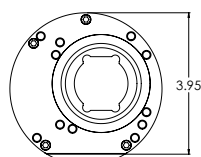
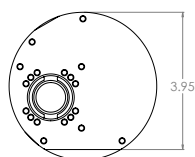
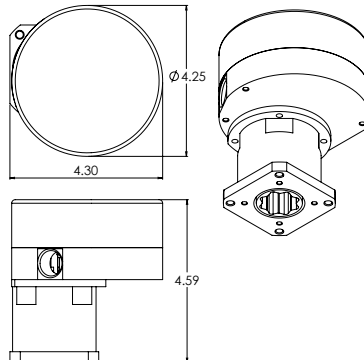
RxJ / RxL / RxM



RxH



RxF



Description and Specifications:

Enclosure: Aluminum die cast anodized or stainless steel
 Class I, Div 1 Groups B, C, D/ T6
 Class II Groups E, F, G/ T6 (85°C)

Temperature range: 0 .. 65 °C internal
 (derate duty cycle at high temp.)

Ext. temp. range: -40 .. 60 °C (w. Heater option)

Stall protection: Electronic position and motion detection

Feedback: TTL, 4 - 20 mA, Modbus

Manual Override: Optional

Gears & Bearings: Metal and bronze, oiled/greased for life

External Fasteners: Stainless Steel

Life Expectance: 250,000 cycles in specified conditions

Motor: Brushless DC motor, computer control

Voltages/Current: 12-24 VDC/Max3A
 110/220 VAC/Max1.5A @ 50/60 Hz

Positioning precision: +/- 3 deg for 1/4 & 1/2 turn
 +/- 0.25 deg for multi turn

Positioning resolution: +/- 0.15 deg max.

Range/ Speed setting: Dip switches inside enclosure

Control options: Analog (4 - 20 mA, 1 - 5 V, 1 - 10 V),
 Modbus, TTL (on/off)

End travel detection: For needle valve, by motion detection

Power setting: Adjustable

Mechanical shock: Repeated ≤ 130 g - force no effect,
 occasional ≤ 150 g - force no effect
 > 150 g - force not tolerated

Mechanical vibration: Random SAE J1211, Chassis, Exterior

Thermal Shock: -20 °C to + 60 °C 10 min

Failsafe battery: LiPo rechargeable battery

Failsafe spring return: For specific selected applications

Weight: RxJ, RxL, RxM: 980 g
 RxH, RxF: 1700 g

RCx Multi-turn models

Model	Torque range [in-lbs]	Speed range [1 turn in sec]
RCJ	4 .. 16	1 .. 7 *
RCL	12 .. 48	1 .. 7
RCM	35 .. 145	4 .. 23
RCH	120 .. 497	18 .. 90
RCF	230 .. 915	38 .. 186

RDx ¼ and ½ turn models [1/4 turn in sec]

RDM	212 .. 247	1 .. 3
RDH	430 .. 532	3 .. 9
RDF	710 .. 1050	5 .. 15

* De-rate the duty cycle to 25% for the highest torque values

Note: speed and torque depend on settings by dip switch of actuator
 Consult user manuals of individual units. Actuators are set for optimum speed.

Other Specifications Multi-turn Models:

Isolated Signals: Optical isolation 1000V min
 [AI and AF models only]

Feedback 4..20mA: For sensing resistor of max. 250 ohms.
 [AF model only]
 Floats +6VDC / -2VDC from power
 Gnd

Position power loss: Standard: "remembers" position before
 shut down, will reseat valve based on
 torque setting when the signal is be-
 tween 3 and 4 mA

Other Specifications ¼ and ½ turn Models:

MDx-xxxDx5

TTL Signal in (Control): Float at 5 V, < 1 mA to pull down
 TTL Signal out (Feedback): 5 V at 2.5 mA max.

MDx-xxxDx24

TTL Signal in (Control): Float at 0 V, < 1 mA to pull to 24 V
 TTL Signal out (Feedback): 24 V at 0.5 A max.

Certifications:

IP 68 (60529:2013)

CSA & IECEx Certified Enclosure

ICES-001 ISSUE 5 July 2020

IEC 61000-6-2:2016, IEC 61000-6-4:2018

FCC 47 CFR PART 15 SUBPART B

EN 61326-1:2013 (GROUP 1, CLASS A; Industrial electromagnetic environment)