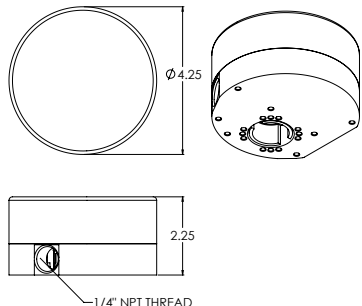
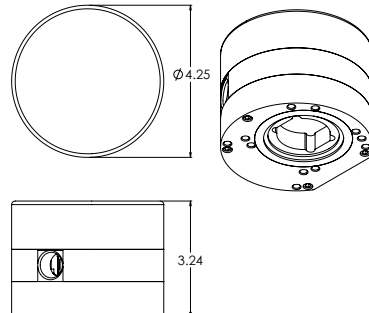




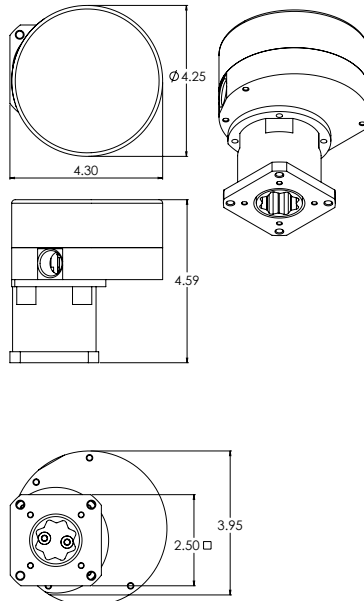
## RxJ / RxL / RxM



## RxH



## RxF



## Description and Specifications:

**Enclosure:** Aluminum die cast anodized, stainless  
Class I, Div 1 Groups B, C, D/ T6  
Class II Groups E, F, G/ T6(85 deg. cel)

**Temperature range:** 0 .. 65 °C internal  
(derate duty cycle at high temp.)

**Ext. temp. range:** -40 .. 60 °C ( w. Heater option)

**Stall protection:** Electronic position and motion detection

**Feedback:** TTL, 4 - 20 mA, Modbus

**Manual Override:** Optional

**Gears & Bearings:** Metal and bronze, oiled/greased for life

**External Fasteners:** Stainless Steel

**Life Expectance:** 250,000 cycles in specified conditions

**Motor:** Brushless DC motor, computer control

**Voltages/Current:** 12-24 VDC/Max3A  
110/220 VAC/Max1.5A @ 50/60 Hz

**Positioning precision:** +/- 3 deg for 1/4 & 1/2 turn  
+/- 0.25 deg for multi turn

**Positioning resolution:** +/- 0.15 deg max.

**Range/ Speed setting:** Dip switches inside enclosure

**Control options:** Analog (4 - 20 mA, 1 - 5 V, 1 - 10 V),  
Modbus, TTL (on/off)

**End travel detection:** For needle valve, by motion detection

**Power setting:** Adjustable

**Mechanical shock:** Repeated ≤ 130 g - force no effect,  
occasional ≤ 150 g - force no effect  
> 150 g - force not tolerated

**Mechanical vibration:** Random SAE J1211, Chassis, Exterior

**Thermal Shock:** -20 °C to + 60 °C 10 min

**Failsafe battery:** LiPo rechargeable battery

**Failsafe spring return:** For specific selected applications

**Weight:** RxJ, RxL, RxM: 980 g  
RxH, RxF: 1700 g

## RCx Multi-turn models

Model	Torque range [in-lbs]	Speed range [1 turn in sec]
RCJ	4 .. 16	1 .. 7 *
RCL	12 .. 48	1 .. 7
RCM	35 .. 145	4 .. 23
RCH	120 .. 497	18 .. 90
RCF	230 .. 915	38 .. 186

## RDx ¼ and ½ turn models [1/4 turn in sec]

RDM	212 .. 247	1 .. 3
RDH	430 .. 532	3 .. 9
RDF	710 .. 1050	5 .. 15

\* De-rate the duty cycle to 25% for the highest torque values

**Note:** speed and torque depend on settings by dip switch of actuator  
Consult user manuals of individual units. Actuators are set for optimum speed.

## Other Specifications Multi-turn Models:

**Isolated Signals:** Optical isolation 1000V min  
[AI and AF models only]

**Feedback 4..20mA:** For sensing resistor of max. 250 ohms.  
[AF model only] Floats +6VDC / -2VDC from power  
Gnd

**Position power loss:** Standard: "remembers" position before  
shut down, will reseat valve based on  
torque setting when the signal is be-  
tween 3 and 4 mA

## Other Specifications ¼ and ½ turn Models:

**TTL Signals in:** Internal pull up, < 1 mA required to pull  
down

**TTL signals out:** Standard: 5 V at 2.5 mA max  
(Feedback) Option: 24 V at 1 A max

## Certifications:

IP 68 (60529:2013)

CSA & IECEx Certified Enclosure

ICES-001 ISSUE 4 JUNE 2006

FCC 47 CFR PART 15 SUBPART B

EN 61362-1:2013 (GROUP 1, CLASS A; Industrial electromagnetic environment)