

Standard Needle Valves

Specifications

- MAWP up to 60,000 PSI (4136 bar)
- Temperature Ratings: -100°F to 600°F

Features & Benefits

- Standard valve fully opens in as little as 3 1/2 turns.
- Solid stainless steel handle.
- Stainless steel captive fixing screw with stainless spring for easier handle removal. Eliminates dropped or misplaced fixing screw.
- 4-sided tapered stem for maximum handle contact. No chance of the handle slipping or loosening on stem.
- Two-piece, heavy-duty, non-rotating stem for a robust and reliable assembly.
- Bi-directional flow capability. Simplifies system designs.
- Packing gland/body thread interface consists of a preload locking internal thread form that is resistant to vibration. Eliminates the need for an external locking device.
- Double sided weep holes for easier leakage verification.
- Complete material traceability.

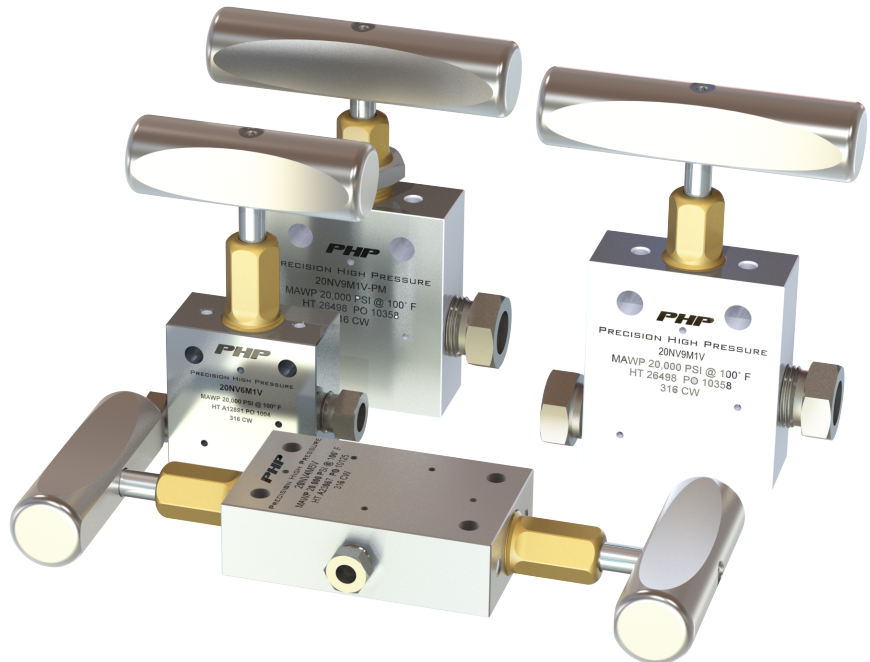
Options

- Air Actuators for Remote Valve Operation – See Page 12 or ordering information
- Can be manufactured to meet NACE MR-01-75
- Grafoil Packing for temperature up to 800°F
- Extended Stuffing Box for temperature up to 1200°F
- For Valve to be manufactured to NACE MR-01-75 add -NACE to end of part number. Pressure rating will change due to NACE, contact factory for revised pressure rating.

Example: 20NV6M1V-NACE

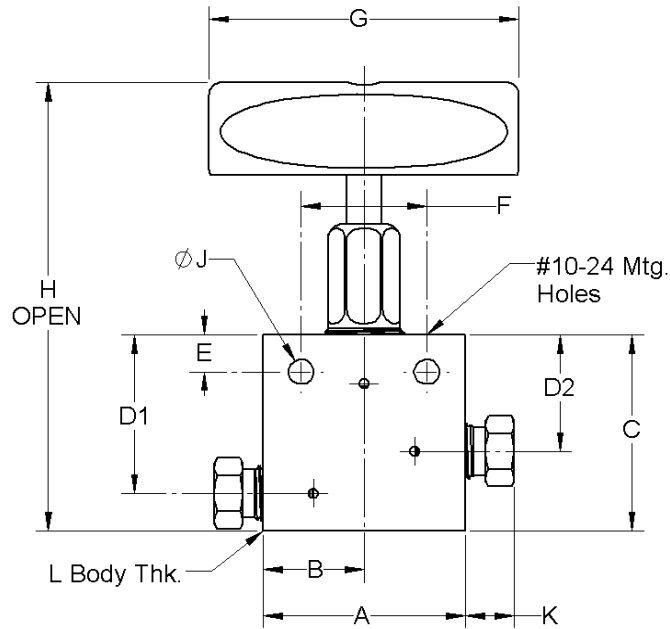
Materials

- Body - 316 cold worked stainless steel
- Packing – Glass filled Teflon
- Stem – 15-5 PH



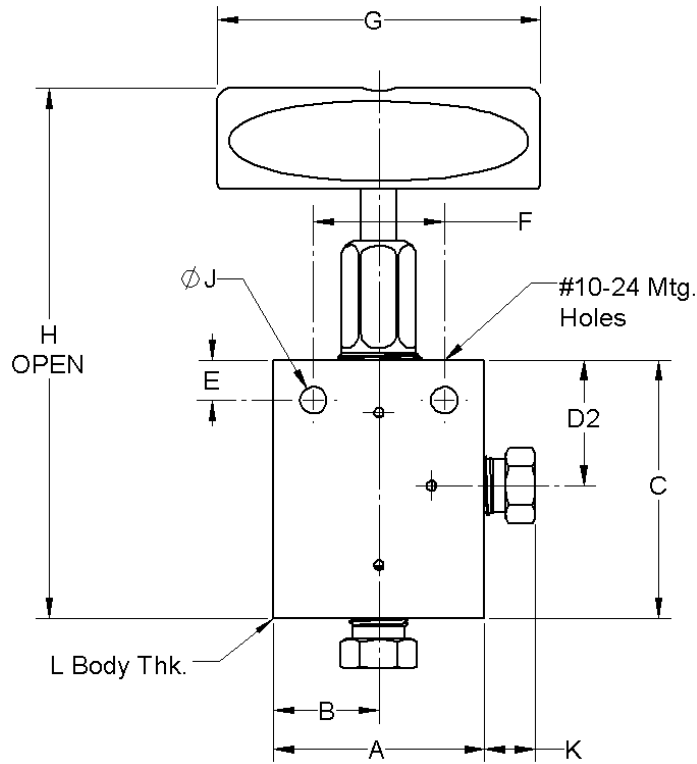
Standard Needle Valves 20,000 – 60,000 PSI

2-Way Straight



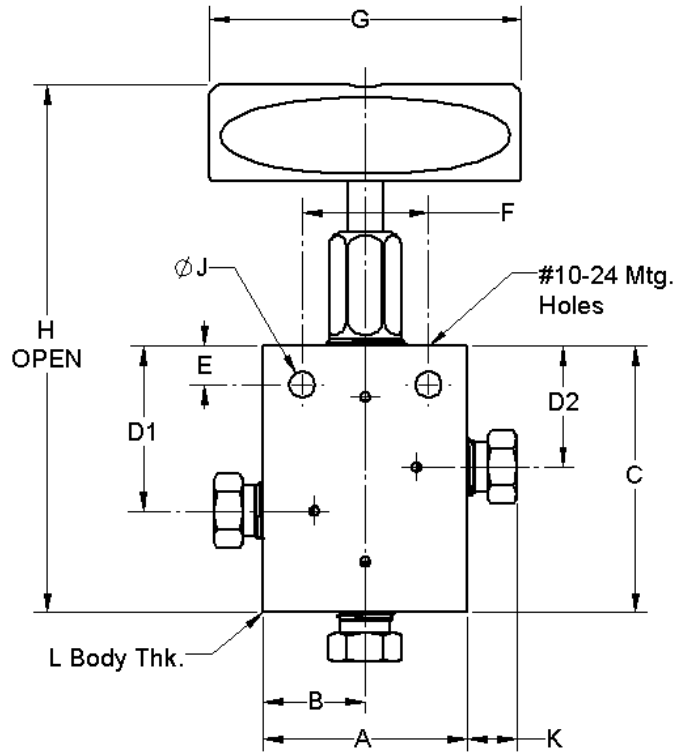
Pressure Rating	Connection Type	End Connection Size in.	Part Number	Orifice in. (mm)	Dimensions, in. (mm)											
					A	B	C	D1	D2	E	F	G	H	J	K	L
20,000 PSI	Medium Pressure Cone & Thread	1/4	20NV4M1	0.125 (3.2)	2.00 (50.8)	1.00 (25.4)	2.00 (50.8)	1.63 (41.3)	1.19 (30.2)	0.38 (9.7)	1.24 (31.5)	3.00 (76.2)	4.84 (123.0)	0.25 (6.4)	0.38 (9.7)	1.00 (25.4)
		3/8	20NV6M1	0.20 (5.1)	2.00 (50.8)	1.00 (25.4)	2.00 (50.8)	1.63 (41.3)	1.19 (30.2)	0.38 (9.7)	1.24 (31.5)	3.00 (76.2)	4.84 (123.0)	0.25 (6.4)	0.48 (12.2)	1.00 (25.4)
		9/16	20NV9M1	0.312 (7.9)	2.50 (63.5)	1.25 (31.8)	2.88 (73.2)	2.38 (60.5)	1.75 (44.5)	0.50 (12.7)	1.38 (35.0)	4.00 (102.0)	5.46 (138.7)	0.34 (8.7)	0.68 (17.3)	1.00 (25.4)
30,000 PSI	High Pressure Cone & Thread	1/4	30NV4H1	0.093 (2.4)	2.00 (50.8)	1.00 (25.4)	2.00 (50.8)	1.50 (38.1)	1.12 (28.5)	0.38 (9.7)	1.38 (35.0)	3.00 (76.2)	4.74 (120.4)	0.28 (7.1)	0.59 (15.0)	1.00 (25.4)
		3/8	30NV6H1	0.125 (3.2)	2.00 (50.8)	1.00 (25.4)	2.00 (50.8)	1.50 (38.1)	1.12 (28.5)	0.38 (9.7)	1.38 (35.0)	3.00 (76.2)	4.74 (120.4)	0.28 (7.1)	0.72 (18.3)	1.00 (25.4)
		9/16	30NV9H1	0.125 (3.2)	2.62 (66.5)	1.31 (33.3)	2.44 (62.0)	1.56 (39.6)	1.12 (28.5)	0.38 (9.7)	1.38 (35.0)	3.00 (76.2)	5.18 (131.6)	0.28 (7.1)	1.00 (25.4)	1.50 (38.1)
60,000 PSI	High Pressure Cone & Thread	1/4	60NV4H1	0.062 (1.6)	2.00 (50.8)	1.00 (25.4)	2.12 (53.8)	1.69 (42.9)	1.31 (33.3)	0.38 (9.7)	1.38 (35.0)	3.00 (76.2)	4.89 (124.2)	0.28 (7.1)	0.59 (15.0)	1.00 (25.4)
		3/8	60NV6H1	0.062 (1.6)	2.00 (50.8)	1.00 (25.4)	2.25 (57.2)	1.69 (42.9)	1.31 (33.3)	0.38 (9.7)	1.38 (35.0)	3.00 (76.2)	5.02 (127.5)	0.28 (7.1)	0.72 (18.3)	1.00 (25.4)
		9/16	60NV9H1	0.062 (1.6)	2.62 (66.5)	1.31 (33.3)	2.50 (63.5)	1.75 (44.5)	1.31 (33.3)	0.38 (9.7)	1.38 (35.0)	3.00 (76.2)	5.27 (133.9)	0.28 (7.1)	1.00 (25.4)	1.50 (38.1)

2-Way Angle



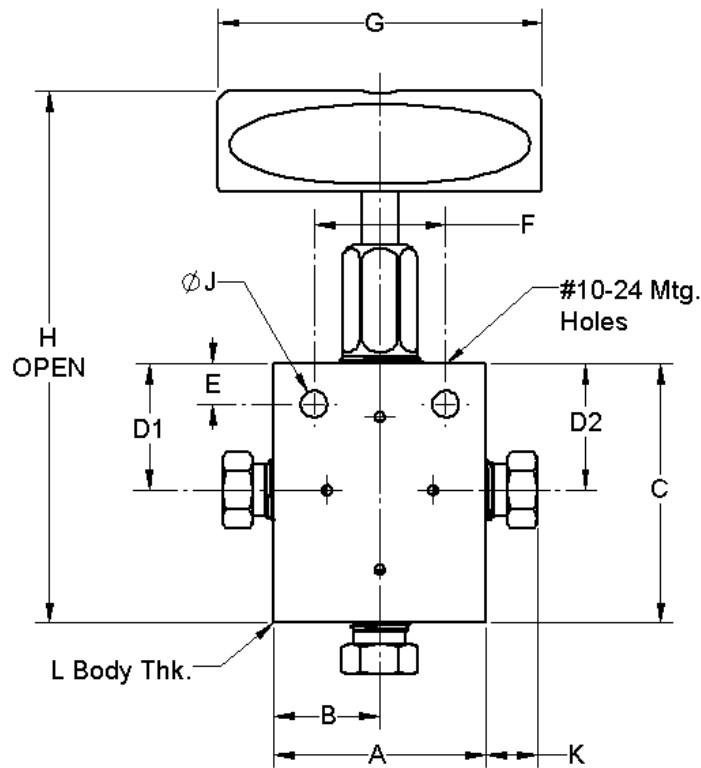
Pressure Rating	Connection Type	End Connection Size in.	Part Number	Orifice in. (mm)	Dimensions, in. (mm)										
					A	B	C	D1	E	F	G	H	J	K	L
20,000 PSI	Medium Pressure Cone & Thread	1/4	20NV4M2	0.125 (3.2)	2.00 (50.8)	1.00 (25.4)	2.44 (62.0)	1.19 (30.2)	0.38 (9.7)	1.24 (31.5)	3.00 (76.2)	5.28 (134.1)	0.25 (6.4)	0.38 (9.7)	1.00 (25.4)
		3/8	20NV6M2	0.20 (5.1)	2.00 (50.8)	1.00 (25.4)	2.44 (62.0)	1.19 (30.2)	0.38 (9.7)	1.24 (31.5)	3.00 (76.2)	5.28 (134.1)	0.25 (6.4)	0.48 (12.2)	1.00 (25.4)
		9/16	20NV9M2	0.312 (7.9)	2.50 (63.5)	1.25 (31.8)	3.38 (85.9)	1.75 (44.5)	0.50 (12.7)	1.38 (35.0)	4.00 (102.0)	5.96 (151.4)	0.34 (8.7)	0.68 (17.3)	1.00 (25.4)
30,000 PSI	High Pressure Cone & Thread	1/4	30NV4H2	0.093 (2.4)	2.00 (50.8)	1.00 (25.4)	2.00 (50.8)	1.12 (28.5)	0.38 (9.7)	1.38 (35.0)	3.00 (76.2)	4.74 (120.4)	0.28 (7.1)	0.59 (15.0)	1.00 (25.4)
		3/8	30NV6H2	0.125 (3.2)	2.00 (50.8)	1.00 (25.4)	2.12 (53.8)	1.12 (28.5)	0.38 (9.7)	1.38 (35.0)	3.00 (76.2)	4.86 (123.4)	0.28 (7.1)	0.72 (18.3)	1.00 (25.4)
		9/16	30NV9H2	0.125 (3.2)	2.62 (66.5)	1.31 (33.3)	2.44 (62.0)	1.12 (28.5)	0.38 (9.7)	1.38 (35.0)	3.00 (76.2)	5.18 (131.6)	0.28 (7.1)	1.00 (25.4)	1.50 (38.1)
60,000 PSI	High Pressure Cone & Thread	1/4	60NV4H2	0.062 (1.6)	2.00 (50.8)	1.00 (25.4)	2.38 (60.5)	1.31 (33.3)	0.38 (9.7)	1.38 (35.0)	3.00 (76.2)	5.15 (130.8)	0.28 (7.1)	0.59 (15.0)	1.00 (25.4)
		3/8	60NV6H2	0.062 (1.6)	2.00 (50.8)	1.00 (25.4)	2.62 (66.5)	1.31 (33.3)	0.38 (9.7)	1.38 (35.0)	3.00 (76.2)	5.39 (136.9)	0.28 (7.1)	0.72 (18.3)	1.00 (25.4)
		9/16	60NV9H2	0.062 (1.6)	2.62 (66.5)	1.31 (33.3)	2.81 (71.4)	1.31 (33.3)	0.38 (9.7)	1.38 (35.0)	3.00 (76.2)	5.58 (141.7)	0.28 (7.1)	1.00 (25.4)	1.50 (38.1)

3-Way 2 Inlet



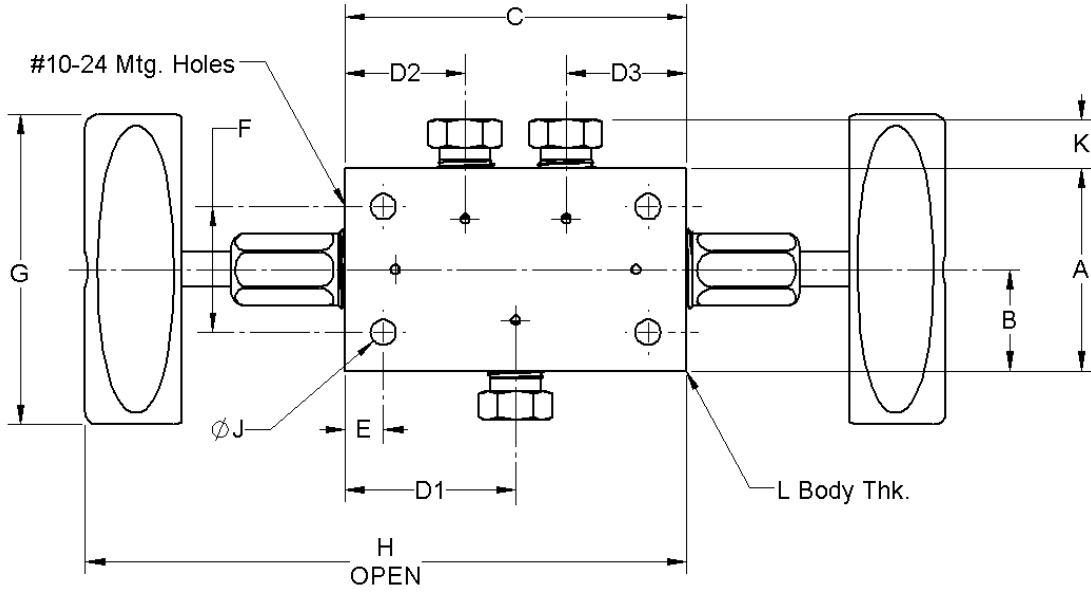
Pressure Rating	Connection Type	End Connection Size in.	Part Number	Orifice in. (mm)	Dimensions, in. (mm)											
					A	B	C	D1	D2	E	F	G	H	J	K	L
20,000 PSI	Medium Pressure Cone & Thread	1/4	20NV4M3	0.125 (3.2)	2.00 (50.8)	1.00 (25.4)	2.62 (66.5)	1.63 (41.3)	1.19 (30.2)	0.38 (9.7)	1.24 (31.5)	3.00 (76.2)	5.46 (138.7)	0.25 (6.4)	0.38 (9.7)	1.00 (25.4)
		3/8	20NV6M3	0.20 (5.1)	2.00 (50.8)	1.00 (25.4)	2.62 (66.5)	1.63 (41.3)	1.19 (30.2)	0.38 (9.7)	1.24 (31.5)	3.00 (76.2)	5.46 (138.7)	0.25 (6.4)	0.48 (12.2)	1.00 (25.4)
		9/16	20NV9M3	0.312 (7.9)	2.50 (63.5)	1.25 (31.8)	3.63 (92.2)	1.75 (44.5)	1.75 (44.5)	0.50 (12.7)	1.38 (35.0)	4.00 (102.0)	6.21 (157.7)	0.34 (8.7)	0.68 (17.3)	1.00 (25.4)
30,000 PSI	High Pressure Cone & Thread	1/4	30NV4H3	0.093 (2.4)	2.00 (50.8)	1.00 (25.4)	2.12 (53.8)	1.50 (38.1)	1.12 (28.5)	0.38 (9.7)	1.38 (35.0)	3.00 (76.2)	4.86 (123.4)	0.28 (7.1)	0.59 (15.0)	1.00 (25.4)
		3/8	30NV6H3	0.125 (3.2)	2.00 (50.8)	1.00 (25.4)	2.50 (63.5)	1.50 (38.1)	1.12 (28.5)	0.38 (9.7)	1.38 (35.0)	3.00 (76.2)	5.24 (133.1)	0.28 (7.1)	0.72 (18.3)	1.00 (25.4)
		9/16	30NV9H3	0.125 (3.2)	2.62 (66.5)	1.31 (33.3)	2.88 (73.2)	1.56 (39.6)	1.12 (28.5)	0.38 (9.7)	1.38 (35.0)	3.00 (76.2)	5.62 (142.7)	0.28 (7.1)	1.00 (25.4)	1.50 (38.1)
60,000 PSI	High Pressure Cone & Thread	1/4	60NV4H3	0.062 (1.6)	2.00 (50.8)	1.00 (25.4)	2.38 (60.5)	1.69 (42.9)	1.31 (33.3)	0.38 (9.7)	1.38 (35.0)	3.00 (76.2)	5.15 (130.8)	0.28 (7.1)	0.59 (15.0)	1.00 (25.4)
		3/8	60NV6H3	0.062 (1.6)	2.00 (50.8)	1.00 (25.4)	2.75 (69.9)	1.69 (42.9)	1.31 (33.3)	0.38 (9.7)	1.38 (35.0)	3.00 (76.2)	5.52 (140.2)	0.28 (7.1)	0.72 (18.3)	1.00 (25.4)
		9/16	60NV9H3	0.062 (1.6)	2.62 (66.5)	1.31 (33.3)	3.03 (77.0)	1.75 (44.5)	1.31 (33.3)	0.38 (9.7)	1.38 (35.0)	3.00 (76.2)	5.82 (147.8)	0.28 (7.1)	1.00 (25.4)	1.50 (38.1)

3-Way 2 Outlet



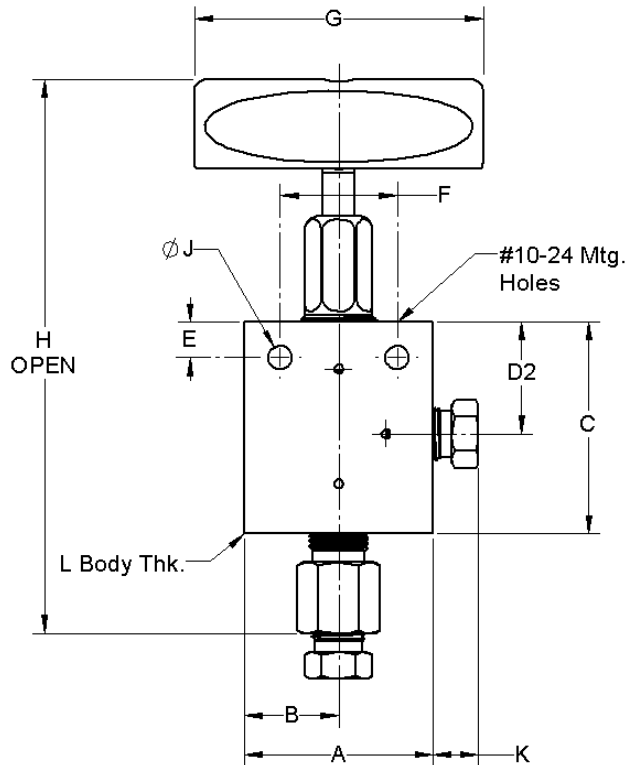
Pressure Rating	Connection Type	End Connection Size in.	Part Number	Orifice in. (mm)	Dimensions, in. (mm)											
					A	B	C	D1	D2	E	F	G	H	J	K	L
20,000 PSI	Medium Pressure Cone & Thread	1/4	20NV4M4	0.125 (3.2)	2.00 (50.8)	1.00 (25.4)	2.44 (62.0)	1.19 (30.2)	1.19 (30.2)	0.38 (9.7)	1.24 (31.5)	3.00 (76.2)	5.28 (134.1)	0.25 (6.4)	0.38 (9.7)	1.00 (25.4)
		3/8	20NV6M4	0.20 (5.1)	2.00 (50.8)	1.00 (25.4)	2.44 (62.0)	1.19 (30.2)	1.19 (30.2)	0.38 (9.7)	1.24 (31.5)	3.00 (76.2)	5.28 (134.1)	0.25 (6.4)	0.48 (12.2)	1.00 (25.4)
		9/16	20NV9M4	0.312 (7.9)	2.50 (63.5)	1.25 (31.8)	3.38 (85.9)	1.75 (44.5)	1.75 (44.5)	0.50 (12.7)	1.38 (35.0)	4.00 (102.0)	5.96 (151.4)	0.34 (8.7)	0.68 (17.3)	1.00 (25.4)
30,000 PSI	High Pressure Cone & Thread	1/4	30NV4H4	0.093 (2.4)	2.00 (50.8)	1.00 (25.4)	2.00 (50.8)	1.12 (28.5)	1.12 (28.5)	0.38 (9.7)	1.38 (35.0)	3.00 (76.2)	4.74 (120.4)	0.28 (7.1)	0.59 (15.0)	1.00 (25.4)
		3/8	30NV6H4	0.125 (3.2)	2.00 (50.8)	1.00 (25.4)	2.12 (53.8)	1.12 (28.5)	1.12 (28.5)	0.38 (9.7)	1.38 (35.0)	3.00 (76.2)	4.86 (123.4)	0.28 (7.1)	0.72 (18.3)	1.00 (25.4)
		9/16	30NV9H4	0.125 (3.2)	2.62 (66.5)	1.31 (33.3)	2.44 (62.0)	1.12 (28.5)	1.12 (28.5)	0.38 (9.7)	1.38 (35.0)	3.00 (76.2)	5.18 (131.6)	0.28 (7.1)	1.00 (25.4)	1.00 (25.4)
60,000 PSI	High Pressure Cone & Thread	1/4	60NV4H4	0.062 (1.6)	2.00 (50.8)	1.00 (25.4)	2.38 (60.5)	1.31 (33.3)	1.31 (33.3)	0.38 (9.7)	1.38 (35.0)	3.00 (76.2)	5.15 (130.8)	0.28 (7.1)	0.59 (15.0)	1.00 (25.4)
		3/8	60NV6H4	0.062 (1.6)	2.00 (50.8)	1.00 (25.4)	2.62 (66.5)	1.31 (33.3)	1.31 (33.3)	0.38 (9.7)	1.38 (35.0)	3.00 (76.2)	5.39 (136.9)	0.28 (7.1)	0.72 (18.3)	1.00 (25.4)
		9/16	60NV9H4	0.062 (1.6)	2.62 (66.5)	1.31 (33.3)	2.81 (71.4)	1.31 (33.3)	1.31 (33.3)	0.38 (9.7)	1.50 (38.1)	3.00 (76.2)	5.58 (141.7)	0.28 (7.1)	1.00 (25.4)	1.50 (38.1)

2-Stem Manifold



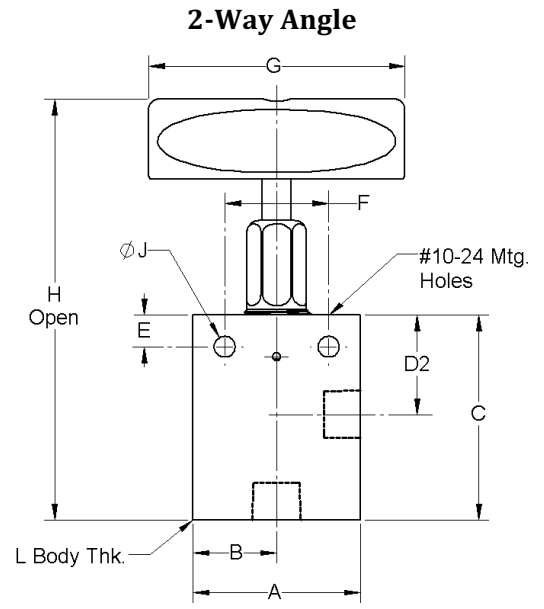
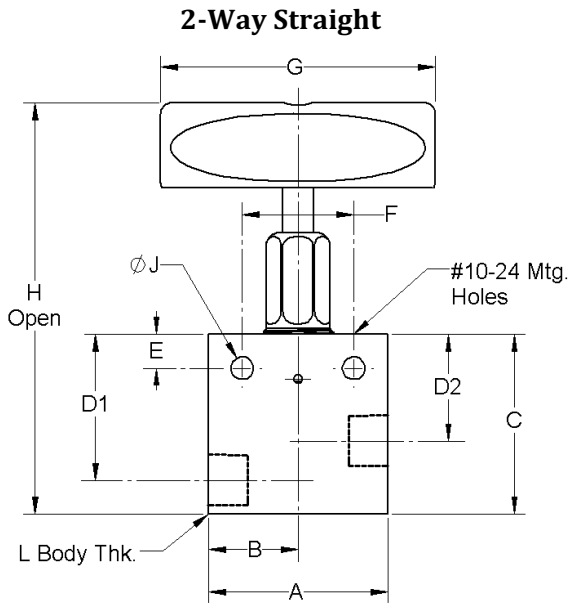
Pressure Rating	Connection Type	End Connection Size in.	Part Number	Orifice in. (mm)	Dimensions, in. (mm)												
					A	B	C	D1	D2	D3	E	F	G	H	J	K	L
20,000 PSI	Medium Pressure Cone & Thread	1/4	20NV4M5	0.125 (3.2)	2.00 (50.8)	1.00 (25.4)	3.38 (85.9)	1.69 (42.9)	1.19 (30.2)	1.19 (30.2)	0.38 (9.7)	1.24 (31.5)	3.00 (76.2)	9.06 (230.1)	0.25 (6.4)	0.38 (9.7)	1.00 (25.4)
		3/8	20NV6M5	0.20 (5.1)	2.00 (50.8)	1.00 (25.4)	3.38 (85.9)	2.56 (65.0)	1.75 (44.5)	1.75 (44.5)	0.38 (9.7)	1.24 (31.5)	3.00 (76.2)	9.06 (230.1)	0.25 (6.4)	0.48 (12.2)	1.00 (25.4)
		9/16	20NV9M5	0.312 (7.9)	2.50 (63.5)	1.25 (31.8)	5.12 (130.0)	2.56 (65.0)	1.75 (44.5)	1.75 (44.5)	0.50 (12.7)	1.38 (35.0)	4.00 (102.0)	10.28 (261.1)	0.34 (8.7)	0.68 (17.3)	1.00 (25.4)
30,000 PSI	High Pressure Cone & Thread	1/4	30NV4H5	0.093 (2.4)	2.00 (50.8)	1.00 (25.4)	3.06 (77.7)	1.53 (38.9)	1.12 (28.4)	1.12 (28.4)	0.38 (9.7)	1.38 (35.0)	3.00 (76.2)	8.54 (216.9)	0.28 (7.1)	0.59 (15.0)	1.00 (25.4)
		3/8	30NV6H5	0.125 (3.2)	2.00 (50.8)	1.00 (25.4)	3.25 (82.6)	1.62 (41.2)	1.12 (28.4)	1.12 (28.4)	0.38 (9.7)	1.38 (35.0)	3.00 (76.2)	8.73 (221.7)	0.28 (7.1)	0.72 (18.3)	1.00 (25.4)
		9/16	30NV9H5	0.125 (3.2)	2.62 (66.5)	1.31 (33.3)	3.75 (95.3)	1.88 (47.8)	1.12 (28.4)	1.12 (28.4)	0.38 (9.7)	1.38 (35.0)	3.00 (76.2)	9.23 (234.4)	0.28 (7.1)	1.00 (25.4)	1.00 (25.4)
60,000 PSI	High Pressure Cone & Thread	1/4	60NV4H5	0.062 (1.6)	2.00 (50.8)	1.00 (25.4)	3.44 (87.4)	1.72 (43.7)	1.31 (33.3)	1.31 (33.3)	0.38 (9.7)	1.38 (35.0)	3.00 (76.2)	8.98 (228.1)	0.28 (7.1)	0.59 (15.0)	1.00 (25.4)
		3/8	60NV6H5	0.062 (1.6)	2.00 (50.8)	1.00 (25.4)	3.75 (95.3)	1.88 (47.8)	1.31 (33.3)	1.31 (33.3)	0.38 (9.7)	1.38 (35.0)	3.00 (76.2)	9.29 (236.0)	0.28 (7.1)	0.72 (18.3)	1.00 (25.4)
		9/16	60NV9H5	0.062 (1.6)	2.62 (66.5)	1.31 (33.3)	4.12 (104.7)	2.06 (52.3)	1.31 (33.3)	1.31 (33.3)	0.38 (9.7)	1.38 (35.0)	3.00 (76.2)	9.66 (245.4)	0.28 (7.1)	1.00 (25.4)	1.50 (38.1)

Replaceable Seat



Pressure Rating	Connection Type	End Connection Size in.	Part Number	Orifice in. (mm)	Dimensions, in. (mm)										
					A	B	C	D1	E	F	G	H	J	K	L
20,000 PSI	Medium Pressure Cone & Thread	1/4	20NV4M6	0.125 (3.2)	2.00 (50.8)	1.00 (25.4)	3.30 (83.8)	1.19 (30.2)	0.38 (9.7)	1.24 (31.5)	3.00 (76.2)	5.09 (129.3)	0.25 (6.4)	0.38 (9.7)	1.00 (25.4)
		3/8	20NV6M6	0.20 (5.1)	2.00 (50.8)	1.00 (25.4)	3.30 (83.8)	1.19 (30.2)	0.38 (9.7)	1.24 (31.5)	3.00 (76.2)	5.09 (129.3)	0.25 (6.4)	0.48 (12.2)	1.00 (25.4)
		9/16	20NV9M6	0.312 (7.9)	2.50 (63.5)	1.25 (31.8)	4.63 (117.6)	1.75 (44.5)	0.50 (12.7)	1.38 (35.0)	4.00 (102.0)	5.83 (148.1)	0.34 (8.7)	0.68 (17.3)	1.00 (25.4)
30,000 PSI	High Pressure Cone & Thread	1/4	30NV4H6	0.093 (2.4)	2.00 (50.8)	1.00 (25.4)	3.46 (87.9)	1.12 (28.5)	0.38 (9.7)	1.38 (35.0)	3.00 (76.2)	5.12 (130.0)	0.28 (7.1)	0.59 (15.0)	1.00 (25.4)
		3/8	30NV6H6	0.125 (3.2)	2.00 (50.8)	1.00 (25.4)	3.37 (85.6)	1.12 (28.5)	0.38 (9.7)	1.38 (35.0)	3.00 (76.2)	5.12 (130.0)	0.28 (7.1)	0.72 (18.3)	1.00 (25.4)
		9/16	30NV9H6	0.125 (3.2)	2.62 (66.5)	1.31 (33.3)	3.64 (92.5)	1.19 (30.2)	0.38 (9.7)	1.38 (35.0)	3.00 (76.2)	5.18 (131.6)	0.28 (7.1)	1.00 (25.4)	1.50 (38.1)
60,000 PSI	High Pressure Cone & Thread	1/4	60NV4H6	0.062 (1.6)	2.00 (50.8)	1.00 (25.4)	3.62 (91.9)	1.31 (33.3)	0.38 (9.7)	1.38 (35.0)	3.00 (76.2)	5.39 (136.9)	0.28 (7.1)	0.59 (15.0)	1.00 (25.4)
		3/8	60NV6H6	0.062 (1.6)	2.00 (50.8)	1.00 (25.4)	3.82 (97.0)	1.31 (33.3)	0.38 (9.7)	1.38 (35.0)	3.00 (76.2)	5.39 (136.9)	0.28 (7.1)	0.72 (18.3)	1.00 (25.4)
		9/16	60NV9H6	0.062 (1.6)	2.62 (66.5)	1.31 (33.3)	4.01 (101.9)	1.31 (33.3)	0.38 (9.7)	1.38 (35.0)	3.00 (76.2)	5.39 (136.9)	0.28 (7.1)	1.00 (25.4)	1.50 (38.1)

Standard Pipe Needle Valves 15,000 PSI



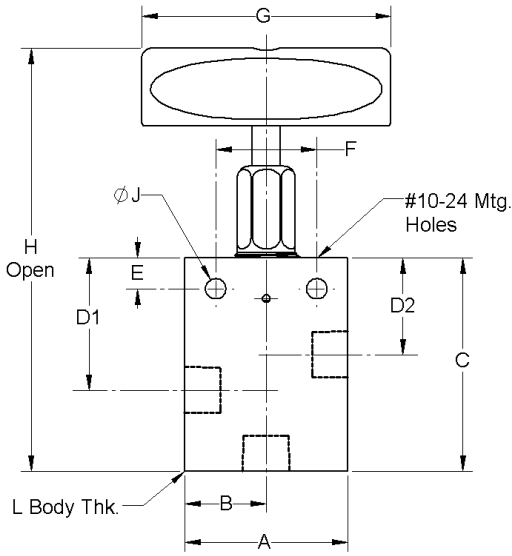
2-Way Straight

Pressure Rating	Connection Type	End Connection Size in.	Part Number	Orifice in. (mm)	Dimensions, in. (mm)										
					A	B	C	D1	D2	E	F	G	H	J	L
15,000 PSI	Female NPT	1/4	15NV4N1	0.25 (6.4)	2.00 (50.8)	1.00 (25.4)	2.00 (50.8)	1.63 (41.28)	1.19 (30.2)	0.38 (9.7)	1.24 (31.5)	3.00 (76.2)	4.84 (123.0)	0.25 (6.4)	1.00 (25.4)
		3/8	15NV6N1	0.312 (7.9)	2.50 (63.5)	1.25 (31.8)	2.88 (73.2)	2.38 (60.4)	1.75 (44.5)	0.50 (12.7)	1.38 (35.0)	4.00 (102.0)	5.46 (139.0)	0.34 (8.7)	1.00 (25.4)
		1/2	15NV8N1	0.312 (7.9)	2.50 (63.5)	1.25 (31.8)	3.00 (76.2)	2.38 (60.4)	1.75 (44.5)	0.50 (12.7)	1.38 (35.0)	4.00 (102.0)	5.58 (142.0)	0.34 (8.7)	1.00 (25.4)

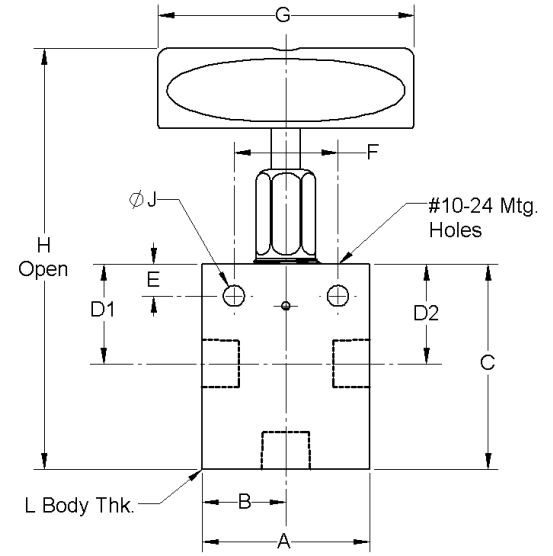
2-Way Angle

Pressure Rating	Connection Type	End Connection Size in.	Part Number	Orifice in. (mm)	Dimensions, in. (mm)									
					A	B	C	D1	E	F	G	H	J	L
15,000 PSI	Female NPT	1/4	15NV4N2	0.25 (6.4)	2.00 (50.8)	1.00 (25.4)	2.44 (62.0)	1.19 (30.2)	0.38 (9.7)	1.24 (31.5)	3.00 (76.2)	5.28 (134.1)	0.25 (6.4)	1.00 (25.4)
		3/8	15NV6N2	0.312 (7.9)	2.50 (63.5)	1.25 (31.8)	3.38 (85.9)	1.75 (44.5)	0.50 (12.7)	1.38 (35.0)	4.00 (102.0)	5.96 (152.0)	0.34 (8.7)	1.00 (25.4)
		1/2	15NV8N2	0.312 (7.9)	2.50 (63.5)	1.25 (31.8)	3.38 (85.9)	1.75 (44.5)	0.50 (12.7)	1.38 (35.0)	4.00 (102.0)	5.96 (152.0)	0.34 (8.7)	1.00 (25.4)

3-Way 2 Inlet



3-Way 2 Outlet



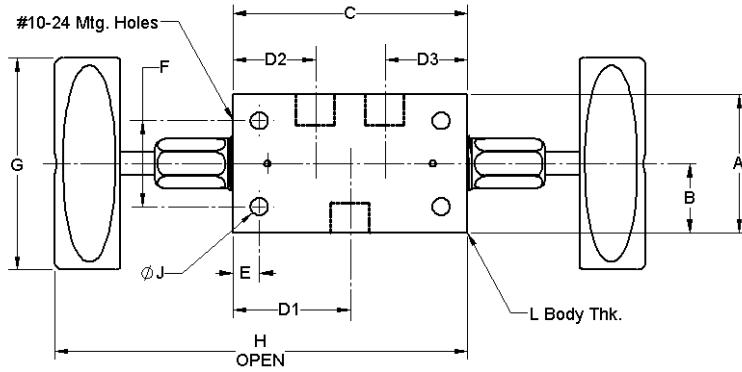
3-Way 2 Inlet

Pressure Rating	Connection Type	End Connection Size in.	Part Number	Orifice in. (mm)	Dimensions, in. (mm)										
					A	B	C	D1	D2	E	F	G	H	J	L
15,000 PSI	Female NPT	1/4	15NV4N3	0.25 (6.4)	2.00 (50.8)	1.00 (25.4)	2.62 (66.5)	1.63 (41.3)	1.19 (30.2)	0.38 (9.7)	1.24 (31.5)	3.00 (76.2)	5.46 (139.0)	0.25 (6.4)	1.00 (25.4)
		3/8	15NV6N3	0.312 (7.9)	2.50 (63.5)	1.25 (31.8)	3.62 (85.9)	2.38 (60.4)	1.75 (44.5)	0.50 (12.7)	1.38 (35.0)	4.00 (102.0)	6.20 (157.5)	0.34 (8.7)	1.00 (25.4)
		1/2	15NV8N3	0.312 (7.9)	2.50 (63.5)	1.25 (31.8)	3.62 (85.9)	2.38 (60.4)	1.75 (44.5)	0.50 (12.7)	1.38 (35.0)	4.00 (102.0)	6.20 (157.5)	0.34 (8.7)	1.25 (31.8)

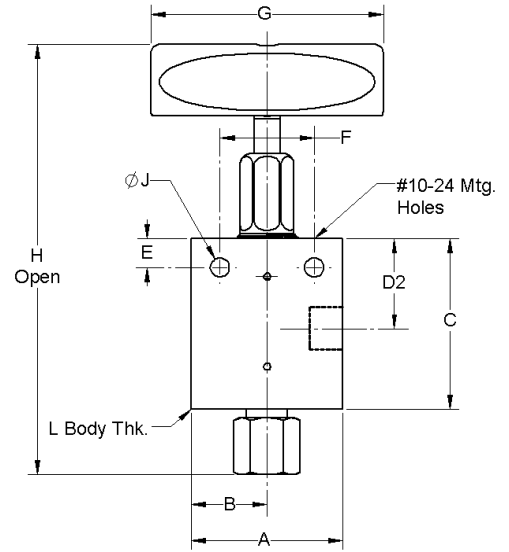
3-Way 2 Outlet

Pressure Rating	Connection Type	End Connection Size in.	Part Number	Orifice in. (mm)	Dimensions, in. (mm)									
					A	B	C	D1	E	F	G	H	J	L
15,000 PSI	Female NPT	1/4	15NV4N4	0.25 (6.4)	2.00 (50.8)	1.00 (25.4)	2.44 (62.0)	1.19 (30.2)	0.38 (9.7)	1.24 (31.5)	3.00 (76.2)	5.28 (134.1)	0.25 (6.4)	1.00 (25.4)
		3/8	15NV6N4	0.312 (7.9)	2.50 (63.5)	1.25 (31.8)	3.38 (85.9)	1.75 (44.5)	0.50 (12.7)	1.38 (35.0)	4.00 (102.0)	5.96 (152.0)	0.34 (8.7)	1.00 (25.4)
		1/2	15NV8N4	0.312 (7.9)	2.50 (63.5)	1.25 (31.8)	3.38 (85.9)	1.75 (44.5)	0.50 (12.7)	1.38 (35.0)	4.00 (102.0)	5.96 (152.0)	0.34 (8.7)	1.25 (31.8)

2-Stem Manifold



Replaceable Seat



2-Stem Manifold

Pressure Rating	Connection Type	End Connection Size in.	Part Number	Orifice in. (mm)	Dimensions, in. (mm)											
					A	B	C	D1	D2	D3	E	F	G	H	J	L
15,000 PSI	Female NPT	1/4	15NV4N5	0.25 (6.4)	2.00 (50.8)	1.00 (25.4)	3.38 (85.9)	1.69 (42.9)	1.19 (30.2)	1.19 (30.2)	0.38 (9.7)	1.24 (31.5)	3.00 (76.2)	9.06 (230.1)	0.25 (6.4)	1.00 (25.4)
		3/8	15NV6N5	0.312 (7.9)	2.50 (63.5)	1.25 (31.8)	5.12 (130.0)	2.56 (65.0)	1.75 (44.5)	1.75 (44.5)	0.50 (12.7)	1.38 (35.0)	4.00 (102.0)	10.28 (261.1)	0.34 (8.7)	1.00 (25.4)
		1/2	15NV8N5	0.312 (7.9)	2.50 (63.5)	1.25 (31.8)	5.12 (130.0)	2.56 (65.0)	1.75 (44.5)	1.75 (44.5)	0.50 (12.7)	1.38 (35.0)	4.00 (102.0)	10.28 (261.1)	0.34 (8.7)	1.25 (31.8)

Replaceable Seat

Pressure Rating	Connection Type	End Connection Size in.	Part Number	Orifice in. (mm)	Dimensions, in. (mm)									
					A	B	C	D1	E	F	G	H	J	L
15,000 PSI	Female NPT	1/4	15NV4N6	0.25 (6.4)	2.00 (50.8)	1.00 (25.4)	3.13 (79.5)	1.19 (30.2)	0.38 (9.7)	1.24 (31.5)	3.00 (76.2)	5.09 (129.3)	0.25 (6.4)	1.00 (25.4)
		3/8	15NV6N6	0.312 (7.9)	2.50 (63.5)	1.25 (31.8)	4.47 (113.5)	1.75 (44.5)	0.50 (12.7)	1.38 (35.0)	4.00 (102.0)	5.83 (148.1)	0.34 (8.7)	1.00 (25.4)
		1/2	15NV8N6	0.312 (7.9)	2.50 (63.5)	1.25 (31.8)	4.47 (113.5)	1.75 (44.5)	0.50 (12.7)	1.38 (35.0)	4.00 (102.0)	5.83 (148.1)	0.34 (8.7)	1.25 (31.8)

Air Actuators

Air Actuators for Remote Valve Operation

Types:

- Normally Closed – Air is required to open the valve
- Normally Open – Air is required to close the valve
- Double Action – Open or close the valve using air pressure

Ordering Information:

Normally Closed: -NC5

Normally Open: -NO5

Double Acting: -DA5

Example: 30NV6H1V becomes 30NV6H1V-NO5

