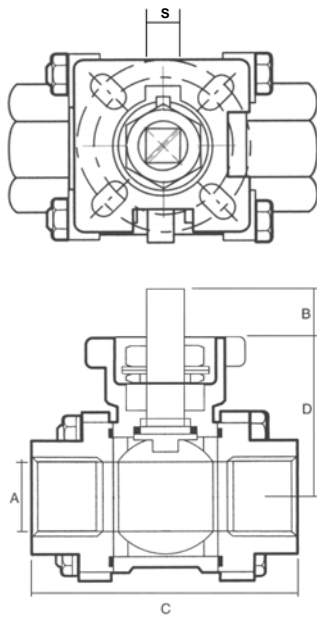


NAQIP

NS3810SS NW3810SS

- Ball Valve
- **NS3810SS** NPT Threaded Ends Per ASME B1.20.1
- **NW3810SS** Socket-Weld Ends
- 1/2" to 2" 1000 PSI, W.O.G.
- Full Port
- Three Piece Investment Cast Body
- Blowout-Proof Stem
- Adjustable Packing Nut
- Anti-Static Design
- Dual ISO 5211 Direct Mount Pad
- Investment Casting
- In-Line Repairable
- CRN For All Provinces



| Dimensions | | | | | |
|-----------------|------|-------|-------|-------|-------|
| Size | 1/2 | 3/4 | 1 | 1 1/2 | 2 |
| in/mm | 15 | 20 | 25 | 40 | 50 |
| A | .500 | .750 | 1.00 | 1.50 | 2.00 |
| in/mm | 15 | 20 | 25 | 38 | 50 |
| B | .35 | .35 | .43 | .55 | .55 |
| in/mm | 9 | 9 | 11 | 14 | 14 |
| C | 2.54 | 3.08 | 3.35 | 4.68 | 5.19 |
| in/mm | 65 | 79 | 86 | 120 | 133 |
| D | 1.68 | 1.81 | 1.96 | 2.63 | 2.94 |
| in/mm | 43 | 46.50 | 50.30 | 67.50 | 75.50 |
| S | .35 | .35 | .41 | .55 | .55 |
| in/mm | 9 | 9 | 11 | 14 | 14 |
| ISO 5211 | F03 | F03 | F04 | F05 | F05 |
| | F04 | F04 | F05 | F07 | F07 |
| Cv | 10 | 25 | 35 | 80 | 110 |

Design & Material Subject To Change Without Notice

| Part | Material |
|----------------|----------------|
| Handle Sleeve | Vinyl |
| Handle | ASTM A276 304 |
| Locking Device | ASTM A276 304 |
| Stem Nut | ASTM A276 304 |
| Bevel Washer | ASTM A276 304 |
| Gland | ASTM A276 301 |
| Stem | ASTM A276 316 |
| Stem Packing | PTFE |
| Thrust Washer | PTFE |
| Bolt Washer | ASTM A276 304 |
| Hex Nut | ASTM A276 304 |
| Bolt | ASTM A276 304 |
| Seat | PTFE |
| Ball | ASTM A351 CF8M |
| Cap | ASTM A351 CF8M |
| Body | ASTM A351 CF8M |

