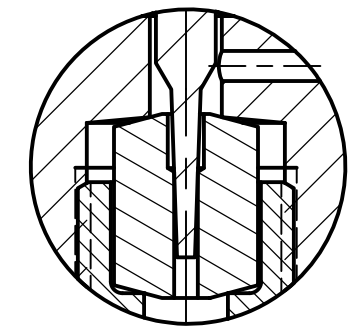
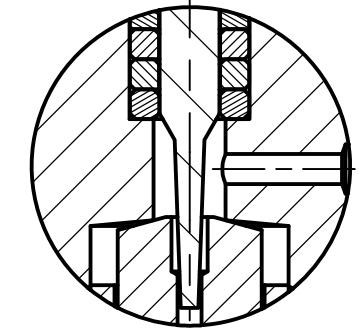


PARTS LIST ~ CAT# B-2594-01

ITEM	QTY	PART NUMBER	DESCRIPTION	MATERIAL	COMMENTS
1	1	B-1395-01	BODY	316 CW	.078 DIA PORT
2	2	A-4336-03-K33	METERING STEM	316 CW	
3	1	A-4337-01	PACKING GLAND	316 CW	
4	1	A-4338-01	TOP PACKING WASHER	316 CW	
5	2	A-2865-02	PACKING	PTFE, 30% GLASS	
6	1	A-4339-03	BOTTOM WASHER	316 CW	
7	1	PH-1358	HANDLE	PLASTIC	
8	2	PH-1006	HEX SOC SET SCREW	300 SER SS	1/4-20 X .38 LG
9	1	PH-1125	HEX SOC SET SCREW	ALLOY STL	1/4-20 X .19 LG
10	1	A-4340-04	SEAT	AMPCO 45	
11	1	A-9724-01	SEAT RETAINER	316 CW	
12	1	A-4099-01	SLEEVE	316 CW	
13	1	A-4100-01	COLLAR	316 CW	
14	2	LPF1	FERRULE	316 CW	NOT SHOWN
15	2	LPG1	GLAND	316 CW	NOT SHOWN



**STEM POSITION
AT MINIMUM FLOW
CAT# B-2594-01**



**STEM POSITION
AT MAXIMUM FLOW
CAT# B2594-01**

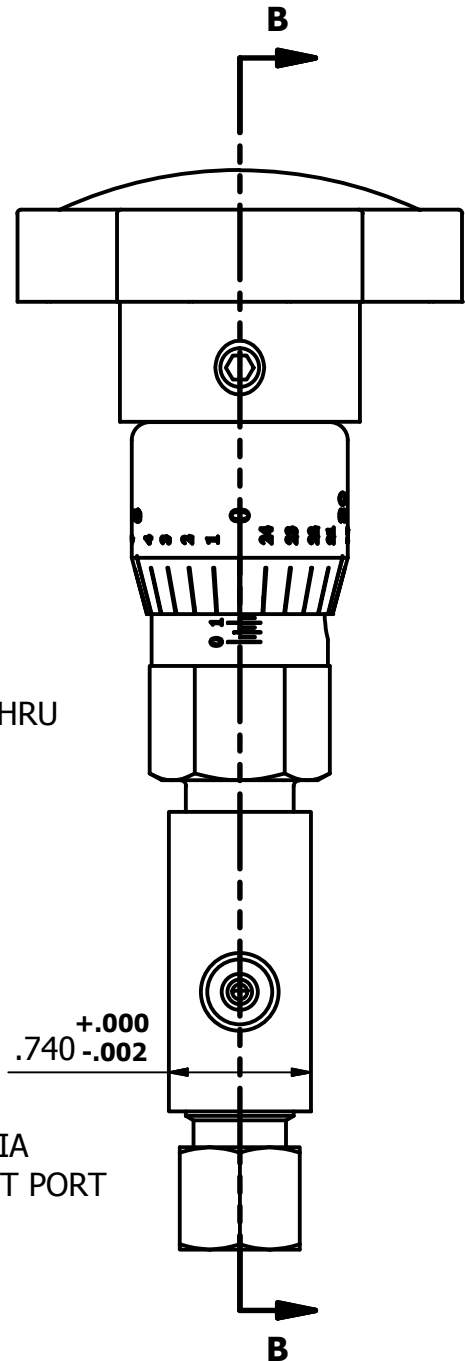
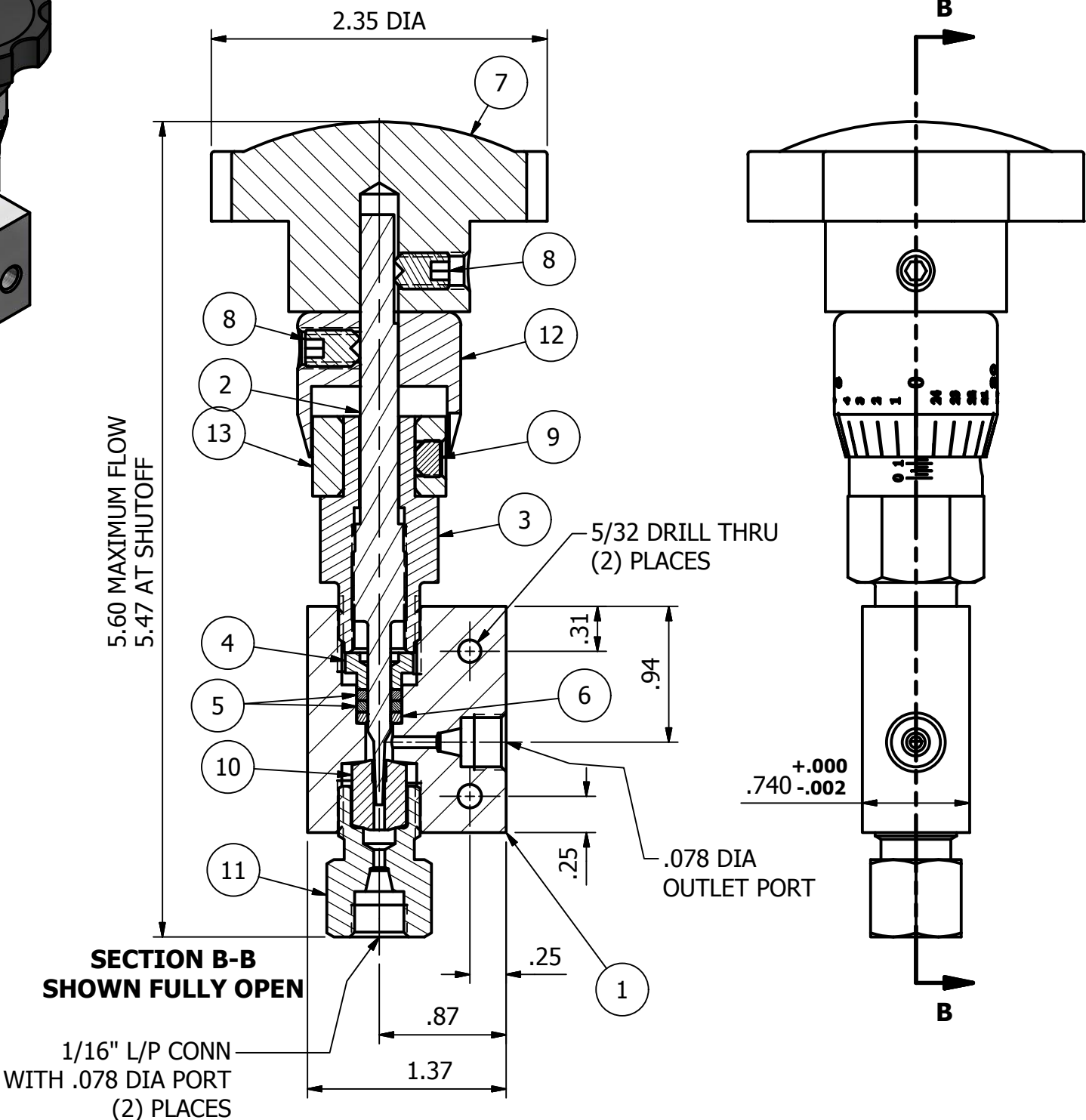
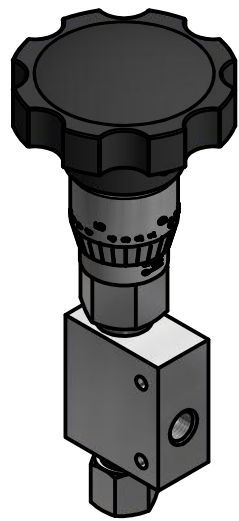
NOTE: FOR CAT# B-2594-02 SEE PAGE 2 of 4, CAT# B-2594-03 SEE PAGE 3 of 4, AND FOR CAT# B-2594-04 SEE PAGE 4 of 4.

INFORMATION CONTAINED HEREIN IS SUBJECT TO THE EXPORT ADMINISTRATION REGULATIONS (EAR) OF THE UNITED STATES OF AMERICA AND EXPORT CLASSIFIED UNDER THOSE REGULATIONS AS (ECCN: EAR99). NO PORTION OF THIS DOCUMENT CAN BE RE-EXPORTED FROM THE RECIPIENT COUNTRY OR RE-TRANSFERRED OR DISCLOSED TO ANY OTHER ENTITY OR PERSON NOT AUTHORIZED TO RECEIVE IT WITHOUT THE PRIOR AUTHORIZATION OF HASKEL INTERNATIONAL. THIS NOTICE SHALL BE ATTACHED TO ANY REPRODUCED SECTION OF THIS DOCUMENT.

THIS INFORMATION IS CONFIDENTIAL, PROPRIETARY, AND EXCLUSIVE PROPERTY OF HASKEL INTERNATIONAL AND MAY NOT BE DISCLOSED OR MADE PUBLIC IN ANY MANNER PRIOR TO EXPRESS WRITTEN AUTHORIZATION BY HASKEL INTERNATIONAL.

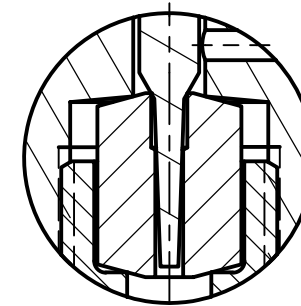
BuTech

SCALE: 1:1	DRAWN: DM	DATE: 12-6-95	CHECKED: DM	APPROVED: DM
REVISION: 7				
DESCRIPTION: REF: B-2200	1/16" SL/P(F) ~ REPLACEABLE SEAT			
TITLE: MICROMETERING VALVE ASSEMBLY	DWG NO: B-2594 1 of 4			

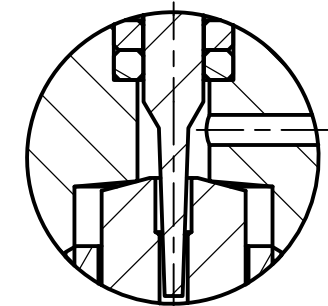


PARTS LIST ~ CAT# B-2594-02

ITEM	QTY	PART NUMBER	DESCRIPTION	MATERIAL	COMMENTS
1	1	B-1395-01	BODY	316 CW	.078 DIA PORT
2	2	A-4336-03-K33	METERING STEM	316 CW	
3	1	A-4337-01	PACKING GLAND	316 CW	
4	1	A-4338-01	TOP PACKING WASHER	316 CW	
5	2	A-2865-02	PACKING	PTFE, 30% GLASS	
6	1	A-4339-03	BOTTOM WASHER	316 CW	
7	1	PH-1358	HANDLE	PLASTIC	
8	2	PH-1006	HEX SOC SET SCREW	300 SER SS	1/4-20 X .38 LG
9	1	PH-1125	HEX SOC SET SCREW	ALLOY STL	1/4-20 X .19 LG
10	1	A-4340-02	SEAT	316 CW	
11	1	A-9724-01	SEAT RETAINER	316 CW	
12	1	A-4099-01	SLEEVE	316 CW	
13	1	A-4100-01	COLLAR	316 CW	
14	2	LPF1	FERRULE	316 CW	NOT SHOWN
15	2	LPG1	GLAND	316 CW	NOT SHOWN



STEM POSITION AT SHUTOFF
CAT# B-2594-02



STEM POSITION AT MAXIMUM FLOW
CAT# B-2594-02

NOTE: FOR CAT# B-2594-01 SEE PAGE 1 of 4, CAT# B-2594-03 SEE PAGE 3 of 4, AND FOR CAT# B-2594-04 SEE PAGE 4 of 4

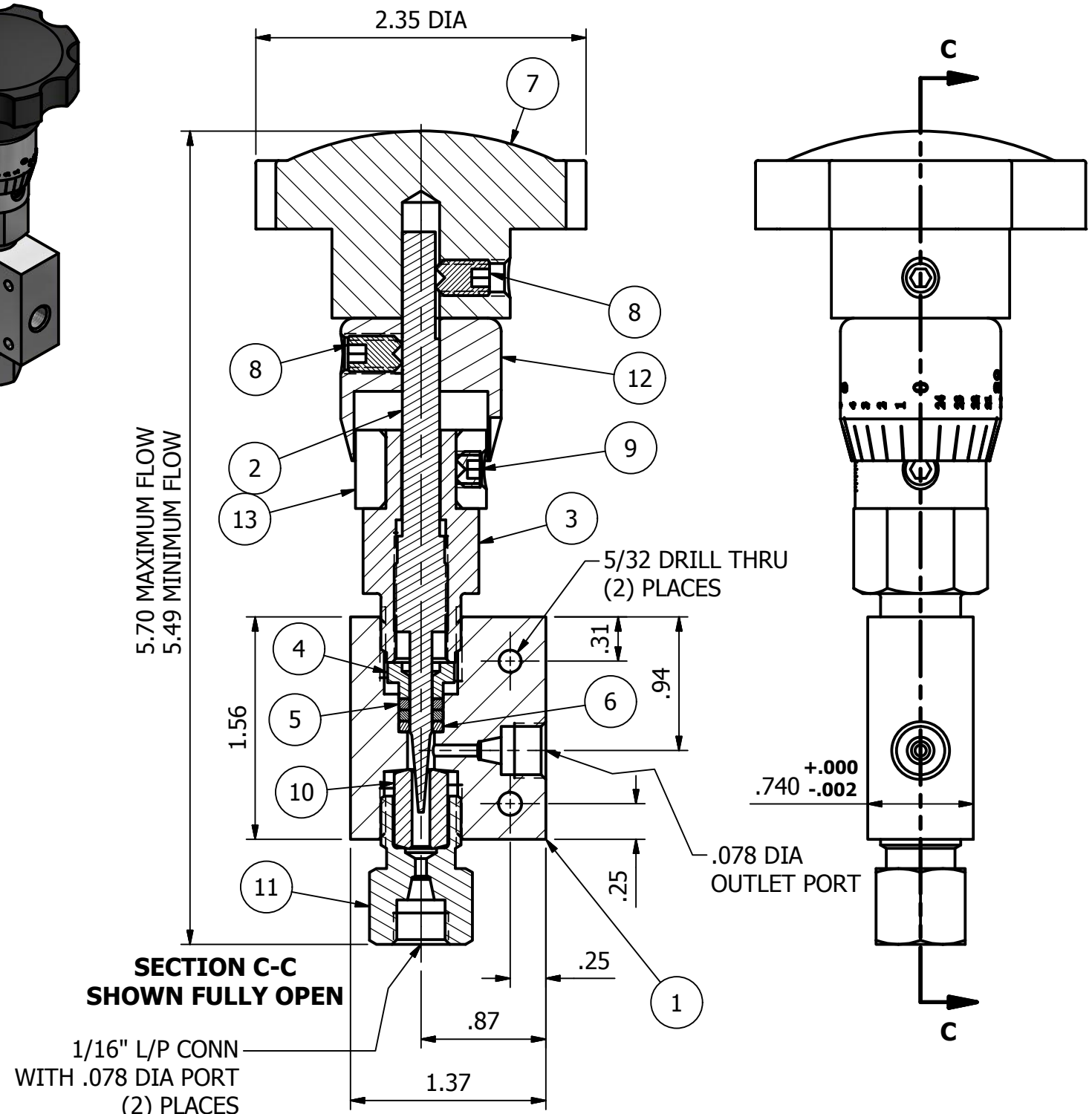
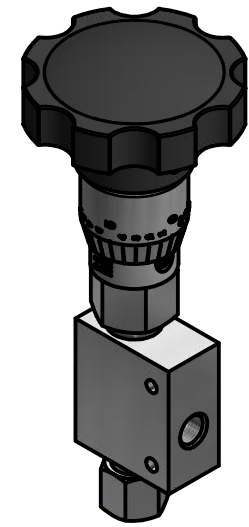
INFORMATION CONTAINED HEREIN IS SUBJECT TO THE EXPORT ADMINISTRATION REGULATIONS (EAR) OF THE UNITED STATES OF AMERICA AND EXPORT CLASSIFIED UNDER THOSE REGULATIONS AS (ECCN: EAR99). NO PORTION OF THIS DOCUMENT CAN BE RE-EXPORTED FROM THE RECIPIENT COUNTRY OR RE-TRANSFERRED OR DISCLOSED TO ANY OTHER ENTITY OR PERSON NOT AUTHORIZED TO RECEIVE IT WITHOUT THE PRIOR AUTHORIZATION OF HASKEL INTERNATIONAL. THIS NOTICE SHALL BE ATTACHED TO ANY REPRODUCED SECTION OF THIS DOCUMENT.

THIS INFORMATION IS CONFIDENTIAL, PROPRIETARY, AND EXCLUSIVE PROPERTY OF HASKEL INTERNATIONAL AND MAY NOT BE DISCLOSED OR MADE PUBLIC IN ANY MANNER PRIOR TO EXPRESS WRITTEN AUTHORIZATION BY HASKEL INTERNATIONAL.

BuTech

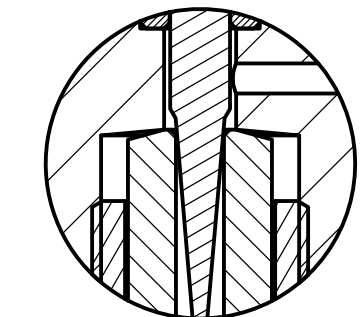
SCALE: 1:1	DRAWN: DM	DATE: 12/6/95	CHECKED: DM	APPROVED: DM
REVISION: 7				
DESCRIPTION: 1/16" SL/P(F) ~ REPLACEABLE SEAT				
TITLE: MICROMETERING VALVE ASSEMBLY				DWG NO: B-2594 2 of 4

MAXIMUM ALLOWABLE WORKING PRESSURE _____ 15,000 PSI @ 72° F.
 MAXIMUM ALLOWABLE WORKING PRESSURE _____ 14,250 PSI @ 320° F.
 HYDROSTATIC TEST PRESSURE _____ 22,500 PSI
 MAX. Cv @ 5 TURNS OPEN _____ .035

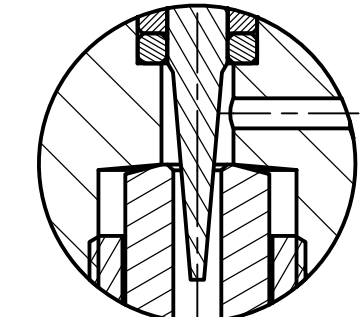


PARTS LIST ~ CAT# B-2594-03

ITEM	QTY	PART NUMBER	DESCRIPTION	MATERIAL	COMMENTS
1	1	B-1395-01	BODY	316 CW	.078 DIA PORT
2	1	A-9735-01-K33	METERING STEM	316 CW	
3	1	A-4337-01	PACKING GLAND	316 CW	
4	1	A-4338-01	TOP PACKING WASHER	316 CW	
5	2	A-2865-02	PACKING	PTFE, 30% GLASS	
6	1	A-4339-03	BOTTOM WASHER	316 CW	
7	1	PH-1358	HANDLE	PLASTIC	
8	2	PH-1006	HEX SOC SET SCREW	300 SER SS	1/4-20 X .38 LG
9	1	PH-1125	HEX SOC SET SCREW	ALLOY STL	1/4-20 X .19 LG
10	1	A-8292-05	SEAT	AMPCO 45	
11	1	A-9724-02	SEAT RETAINER	316 CW	
12	1	A-4099-01	SLEEVE	316 CW	
13	1	A-4100-01	COLLAR	316 CW	
14	2	LPF2	FERRULE	316 CW	NOT SHOWN
15	2	LPG2	GLAND	316 CW	NOT SHOWN



STEM AT MINIMUM FLOW



STEM POSITION MAXIMUM FLOW

NOTE: FOR CAT# B-2594-01 SEE PAGE 1 of 4, CAT# B-2594-02 SEE PAGE 2 of 4, AND FOR CAT# B-2594-04 SEE PAGE 4 of 4.

INFORMATION CONTAINED HEREIN IS SUBJECT TO THE EXPORT ADMINISTRATION REGULATIONS (EAR) OF THE UNITED STATES OF AMERICA AND EXPORT CLASSIFIED UNDER THOSE REGULATIONS AS (ECCN: EAR99). NO PORTION OF THIS DOCUMENT CAN BE RE-EXPORTED FROM THE RECIPIENT COUNTRY OR RE-TRANSFERRED OR DISCLOSED TO ANY OTHER ENTITY OR PERSON NOT AUTHORIZED TO RECEIVE IT WITHOUT THE PRIOR AUTHORIZATION OF HASKEL INTERNATIONAL. THIS NOTICE SHALL BE ATTACHED TO ANY REPRODUCED SECTION OF THIS DOCUMENT.

THIS INFORMATION IS CONFIDENTIAL, PROPRIETARY, AND EXCLUSIVE PROPERTY OF HASKEL INTERNATIONAL AND MAY NOT BE DISCLOSED OR MADE PUBLIC IN ANY MANNER PRIOR TO EXPRESS WRITTEN AUTHORIZATION BY HASKEL INTERNATIONAL.



SCALE: 1:1	DRAWN: DM	DATE: 12/6/95	CHECKED: DM	APPROVED: DM
REVISION: 7				
DESCRIPTION: 1/16" SL/P(F) ~ REPLACEABLE SEAT				
TITLE: MICROMETERING VALVE ASSEMBLY				DWG NO: B-2594 3 of 4

MAXIMUM ALLOWABLE WORKING PRESSURE	15,000 PSI @ 72° F.
MAXIMUM ALLOWABLE WORKING PRESSURE	14,250 PSI @ 320° F.
HYDROSTATIC TEST PRESSURE	22,500 PSI
MAX. Cv @ 8 TURNS OPEN	.160

4

3

2

1

REV#	REVISION	ECO	BY	DATE	CHK	APP
2	CHANGED IT# 2 P/N WAS A-4336-01, IT# 6 P/N WAS A-4339-01	1112	MH	6/30/98	MH	DTG
3	MAWP WAS 11,500 PSI @ 72F., & 10,00PSI @ 300F., HYDRO WAS 12,500 PSI	4208	MH	3/13/07	MH	DTG
4	INCREASED CONN PORT SIZE PER CUST REQUEST; WAS .042", IT# 11 P/N WAS A-4341-01	32124	DS	3/18/16	DTG	DS
5	UPDATED IN INVENTOR. ADDED CAT# B-2594-03. CHANGED STEM P/N ON CAT# -01 & -02 WAS -03. CHANGED IT#10 ON CAT# -01 P/N WAS A-4340-01, MATL WAS 316 CW.	32248	MH	8/15/16	DTG	DTG
6	ADDED CAT# B-2594-04	32428	MH	4-5-17	DTG	DTG
7	CHANGED BODY P/N WAS B-1395-01	32528	MH	7-26-17	DTG	DTG

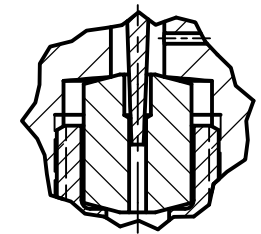
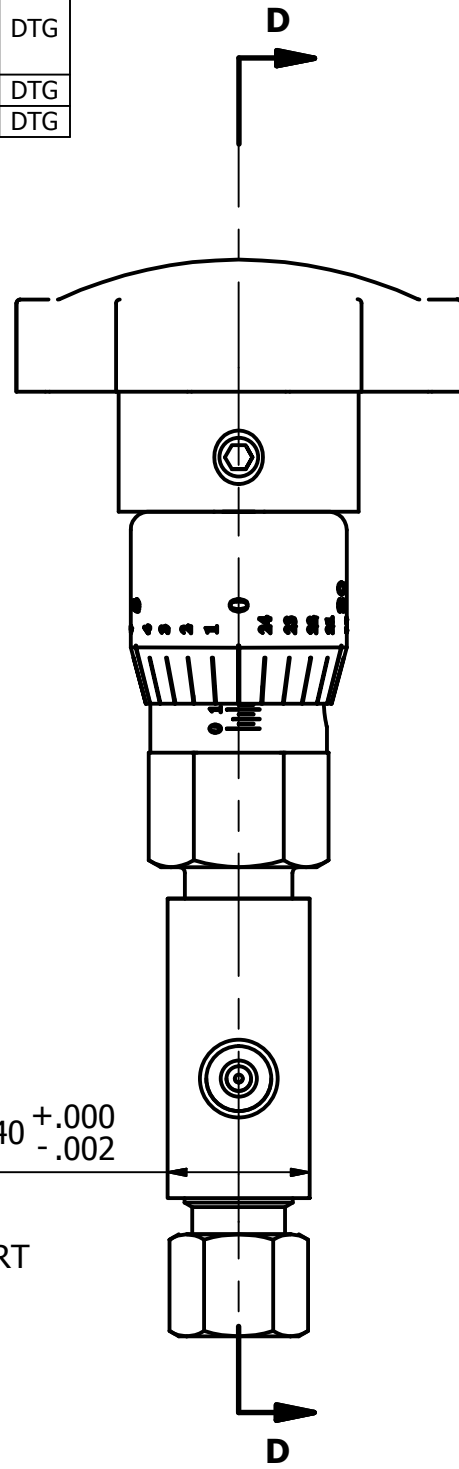
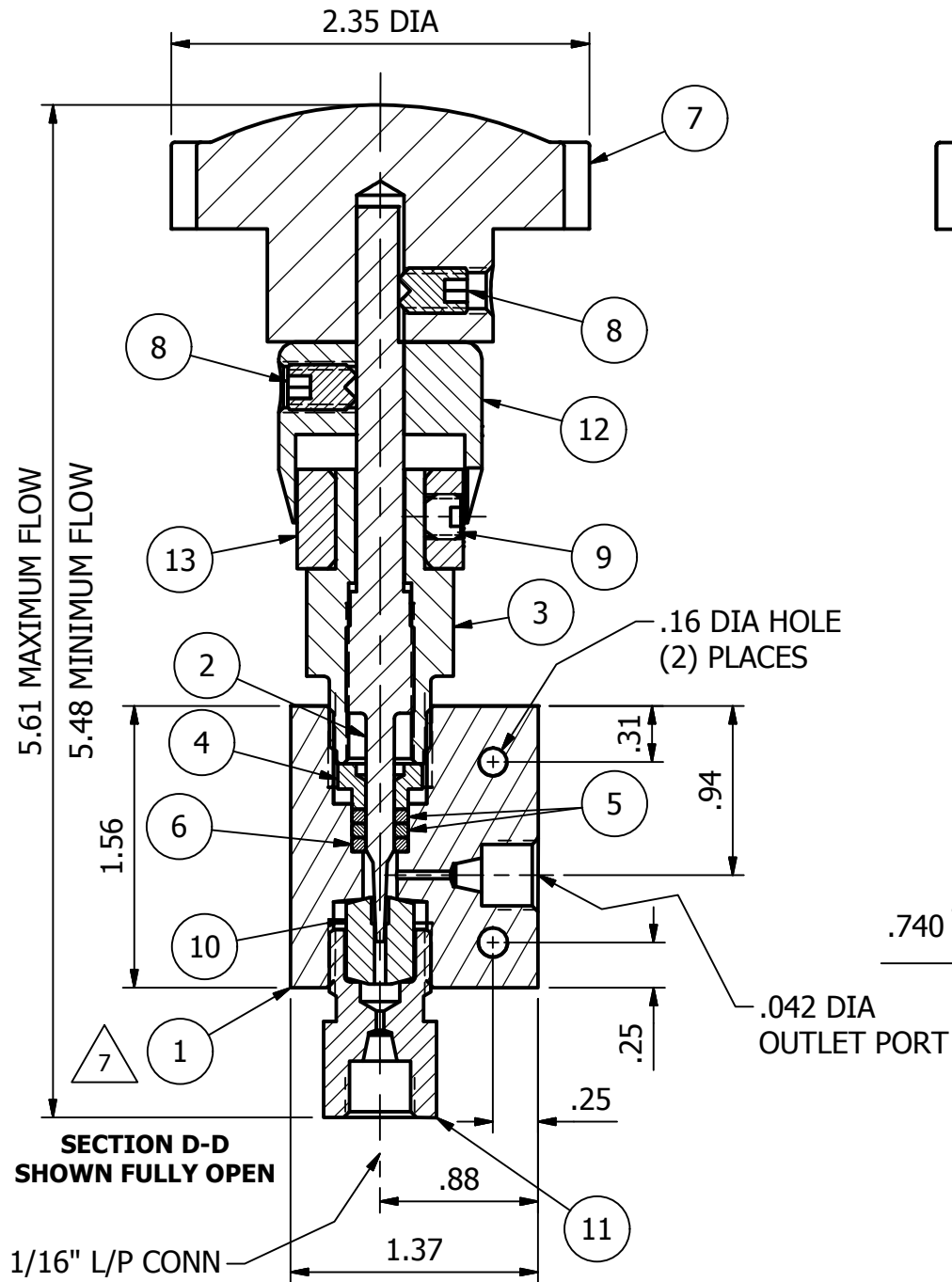
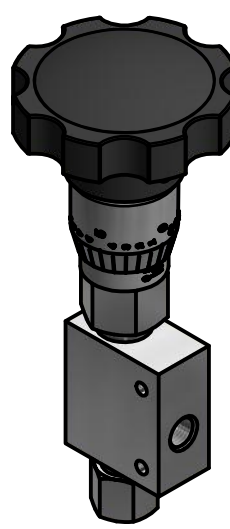
PARTS LIST ~ CAT# B-2594-04

ITEM	QTY	PART NUMBER	DESCRIPTION	MATERIAL	REMARKS
1	1	B-1395-02	BODY	316 CW	.042 DIA PORT
2	1	A-4336-03	METERING STEM	316 CW	
3	1	A-4337-01	PACKING GLAND	316 CW	
4	1	A-4338-01	TOP PACKING WASHER	316 CW	
5	2	A-2865-02	PACKING	PTFE, 30% GLASS	
6	1	A-4339-03	BOTTOM WASHER	316 CW	
7	1	PH-1358	HANDLE	PLASTIC	
8	2	PH-1006	HEX SOC SET SCREW	300 SER SS	1/4-20 X .38 LG
9	1	PH-1125	HEX SOC SET SCREW	ALLOY STL	1/4-20 X .19 LG
10	1	A-4340-01	SEAT	316 CW	
11	1	A-4341-01	SEAT RETAINER	316 CW	
12	1	A-4099-01	SLEEVE	316 CW	
13	1	A-4100-01	COLLAR	316 CW	
14	2	LPF1	FERRULE	316 CW	NOT SHOWN
15	2	LPG1	GLAND	316 CW	NOT SHOWN

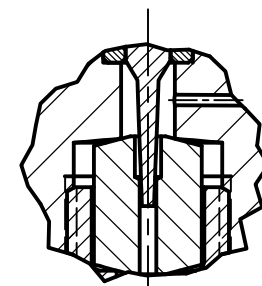
B

A

A



STEM POSITION AT MINIMUM FLOW CAT# B-2594-04



STEM POSITION AT MAXIMUM FLOW CAT# B-2594-04

NOTE: FOR CAT# B-2594-01 SEE PAGE 1 of 4, CAT# B-2594-02 SEE PAGE 2 of 4, AND FOR CAT# B-2594-03 SEE PAGE 3 of 4.

INFORMATION CONTAINED HEREIN IS SUBJECT TO THE EXPORT ADMINISTRATION REGULATIONS (EAR) OF THE UNITED STATES OF AMERICA AND EXPORT CLASSIFIED UNDER THOSE REGULATIONS AS (ECCN: EAR99). NO PORTION OF THIS DOCUMENT CAN BE RE-EXPORTED FROM THE RECIPIENT COUNTRY OR RE-TRANSFERRED OR DISCLOSED TO ANY OTHER ENTITY OR PERSON NOT AUTHORIZED TO RECEIVE IT WITHOUT THE PRIOR AUTHORIZATION OF HASKEL INTERNATIONAL. THIS NOTICE SHALL BE ATTACHED TO ANY REPRODUCED SECTION OF THIS DOCUMENT.

THIS INFORMATION IS CONFIDENTIAL, PROPRIETARY, AND EXCLUSIVE PROPERTY OF HASKEL INTERNATIONAL AND MAY NOT BE DISCLOSED OR MADE PUBLIC IN ANY MANNER PRIOR TO EXPRESS WRITTEN AUTHORIZATION BY HASKEL INTERNATIONAL.

SCALE: 1:1	DRAWN: DM	DATE: 12-6-95	CHECKED: DM	APPROVED: DM
REVISION: 7				
DESCRIPTION: 1/16" SL/P(F) ~ REPLACEABLE SEAT				
TITLE: MICROMETERING VALVE ASSEMBLY				DWG NO: B-2594 4 of 4

MAXIMUM ALLOWABLE WORKING PRESSURE	15,000 PSI @ 72° F.
MAXIMUM ALLOWABLE WORKING PRESSURE	14,250 PSI @ 320° F.
HYDROSTATIC TEST PRESSURE	22,500 PSI
MAX. Cv @ 5 TURNS OPEN	.029

4

3

2

1